

Face Mask

This is a Two-Step project

1. The face mask is made first and allowed to dry fully (24 hours, or use a hair dryer or the sun to speed up the drying)
2. Then you can paint the entire project

Supplies

1. Paper mache paste (homemade recipe or purchased)
2. Newspaper, paper bags, paper, cut into strips
3. Cardboard
4. Plastic face mask (or your own face!)
5. Vaseline (in a pinch I used coconut oil)
6. Marker/sharpie
7. Scissors
8. Acrylic paint or spray paint
9. Paintbrushes
10. Hairdryer (to speed drying if you wish)

PART 1: Mask Instructions



1. Make your paste
2. Cut paper into strips
 - a. Cut some strips wide, narrow, long, short etc
 - b. Cut more strips than you think you might need



3. Coat your face (or mask) in Vaseline. Or if you realize you don't have any, I lathered a thick layer of coconut oil.

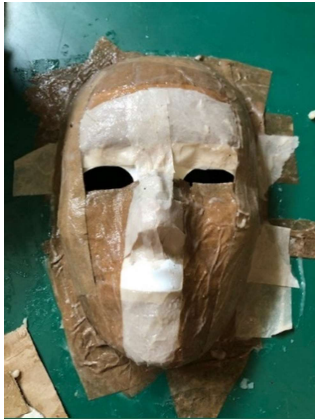
Without this, as the mask dries, it will stick!



4. Dip a strip of paper into the paste
5. Using your fingers, gently squeeze the excess off

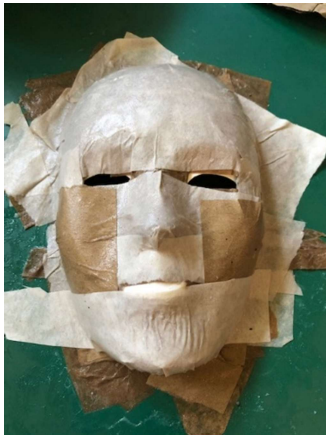


6. Lay wide strips along jaw, forehead and nose bridge.



7. To create air holes, lay a vertical strip along the nose to the top of the mouth

(I enclosed the nose here as it's a mask, but if using a human leave some air holes 😊)



8. Lay some vertical strips on the sides, layer more horizontal strips.

9. Repeat laying strips until its 2-4 layers (no more or it might not dry properly)

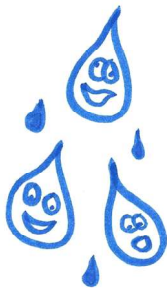
10. To make the final layer smoother, use larger pieces of paper (computer paper works well)



11. Allow the mask to dry *in place* for 2-3 hours (yep you have to wear it!)

12. To speed this up, you can use a hairdryer. Just tap the mask, it should feel a little hard.

13. Peel off the mask carefully. If there are rips you can fix with more paper mache



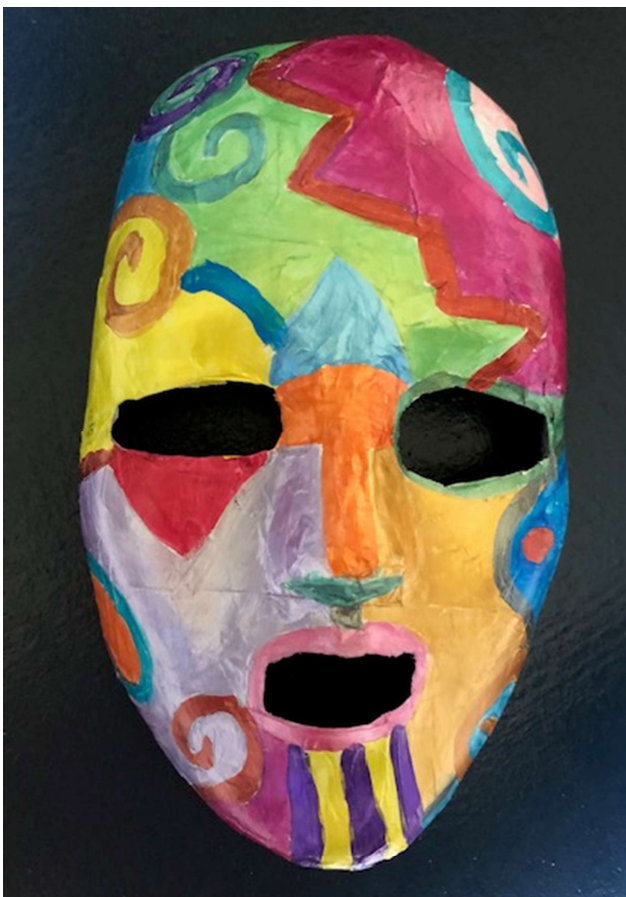
14. Wash your face 😊

15. And likely hair, like me.

PART 2: Finishing the Mask



16. Once the mask dries for 24 hours, cut it so it looks neater in the face, eyes and mouth.



17. Paint away! Whatever your dreams and imagination inspire!